



Benefits Realized

- Advanced path management
- Increase data integrity
- Reporting/logging of all activity
- Connection to enterprise
- Reduced technical support required
- Minimize unexpected outages
- Minimize rework
- Quick recovery from failure
- Regulatory compliance

"The NovaTech system has substantially increased reliability, improved data integrity, and made my job a whole lot easier."

Electrical Superintendent ADM

NovaTech, LLC
 11500 Cronridge Drive
 Suite 110
 Owings Mills, MD 21117
 www.novatechweb.com

Grain Export Load-Out

Time is a terrible thing to waste.

See how NovaTech helps customers save time and money with our modern and reliable D/3[®] DCS automation and control solution for Grain Export Load-out application.

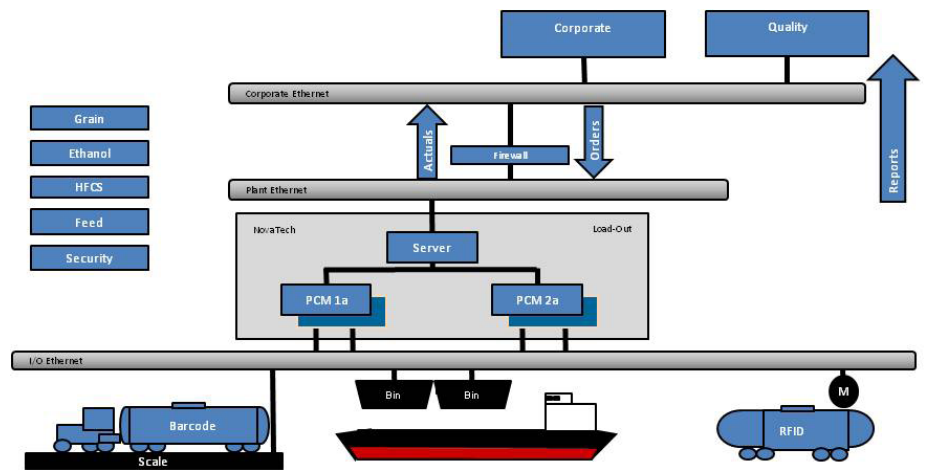
WHY DO THE LARGEST GRAIN PRODUCERS CHOOSE NOVATECH?

NovaTech's process control division provides solutions to many of the largest and most complex Grain Export Load-out facilities in the world. These facilities routinely deliver grain to customers globally. With the increase in regulation, international import restrictions, and the need for maximum efficiency, companies turn to NovaTech to deliver systems that provide maximum performance under all operating conditions.

BUSINESS CHALLENGE

NovaTech's experience with Grain Export Load-out facilities will help you avoid:

1. Data integrity issues
2. Downtime and costs due to rework
3. Unexpected system outages
4. Slow recovery from equipment failure



NOVATECH SOLUTION

The NovaTech Grain Export Load-out solution is based on our D/3[®] Distributed Control System. The D/3 system provides the reliable, scalable and fully redundant platform required for an operation of this magnitude. The D/3 is fully integrated to system PLC's, Barcode readers, Inspection/Grade systems, RFID devices, and to corporate Quality and ERP systems. The D/3 is used to control and monitor the grain flow, provide human machine interface, facilitate alarm management, reporting, trending and archiving of data.



KEY FEATURES OF NOVATECH APPLICATIONS

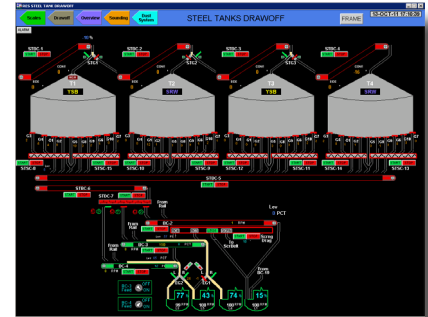
Visualization

NovaTech develops grain export load-out systems utilizing modern visualization, programming, sequencing, alarming, and interlocking techniques. Operators access hierarchical visualizations featuring plant overviews, path flow, and specific equipment graphics. Additionally operators can easily access and manage reports, logs, and alarms from the intuitive operator interface. Our upgrading customers can choose to mitigate risk and reduce expense by developing visualization screens and custom graphics that mimic their existing systems; this results in faster start-ups and virtually no operator training is required at cut-over.



Path Management

Path management is obviously of great importance with respect to the overall grain management system. The NovaTech system employs sophisticated interlocking and sequencing techniques to ensure the proper flow of grain from source to destination. Whether unloading barges or filling ships, the NovaTech system is constantly monitoring the state of all equipment to ensure flow path integrity. Furthermore, the NovaTech system facilitates sophisticated blending, weigh-back, and quality monitoring systems.



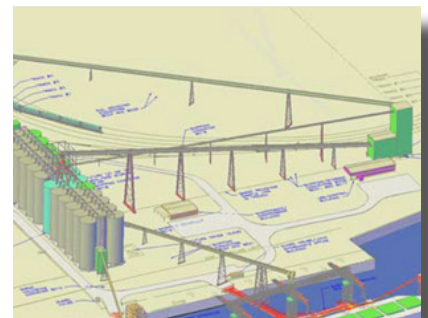
Reporting/Logging/Data Integrity

The ability to deliver grain from source to destination in a safe and efficient manner is only half of the story of the NovaTech Grain Export Load-out System. Proper tracking, logging and reporting of material transfers is as critical as the grain transfer itself. The NovaTech system features redundant data collectors and reporting services to ensure data integrity even in the event of a server failure. All operator activity, equipment allocations, equipment failures, re-works, blends and transfers are tracked. Order and scheduling data is received from the corporate ERP system and "actual" data is automatically transferred to corporate QA and regulatory inspection systems, such as FGIS. Since the system is fully integrated, record keeping, data integrity, reporting and tracking are optimized.



Regulatory Compliance

Most regulatory compliance systems are designed to constantly monitor the grain flow, sampling, and weighing systems. Additionally the system must provide the necessary safeguards and hardcopy documentation required to operate the official weighing system without 100% physical supervision of the bulk weigh scales and grain flow system. NovaTech's U.S. installations fully integrate the U.S. FGIS with customer systems. This approach significantly reduces errors, reworks and delays due to discrepancies between the regulatory and customer system. NovaTech has the capability to integrate with any other regulatory compliance system.



For more information on how NovaTech helps the top grain producers improve profitability, visit us online at www.novatechweb.com or call 800.253.3842