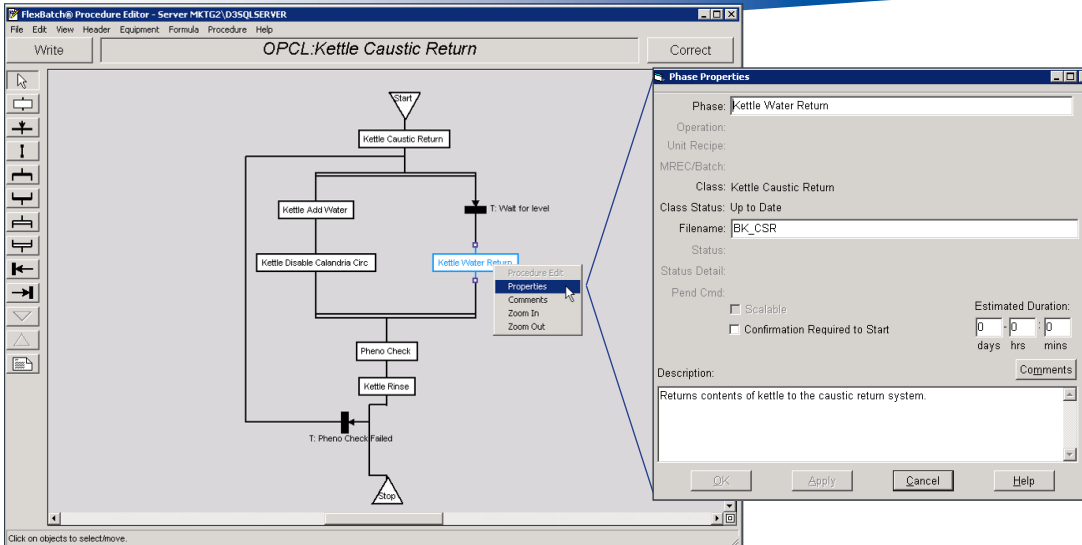




FlexBatch[®]

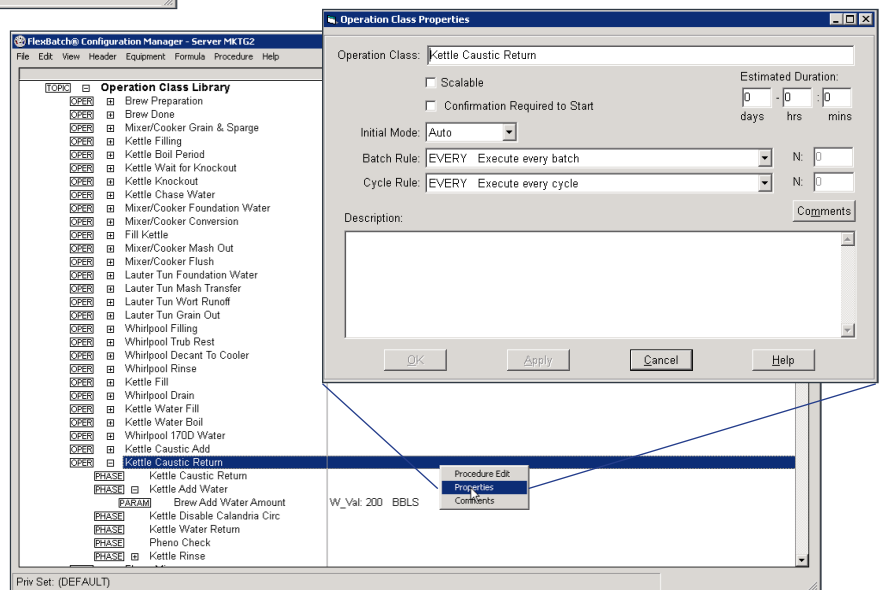
ISA-88 Batch
Management Software

Create Phases & Operations



Create Operations graphically with the Procedure Editor

Organize Phases and Operations in Class Libraries and assign valid equipment with the Configuration Manager



Modular, Flexible & Efficient Batch Automation

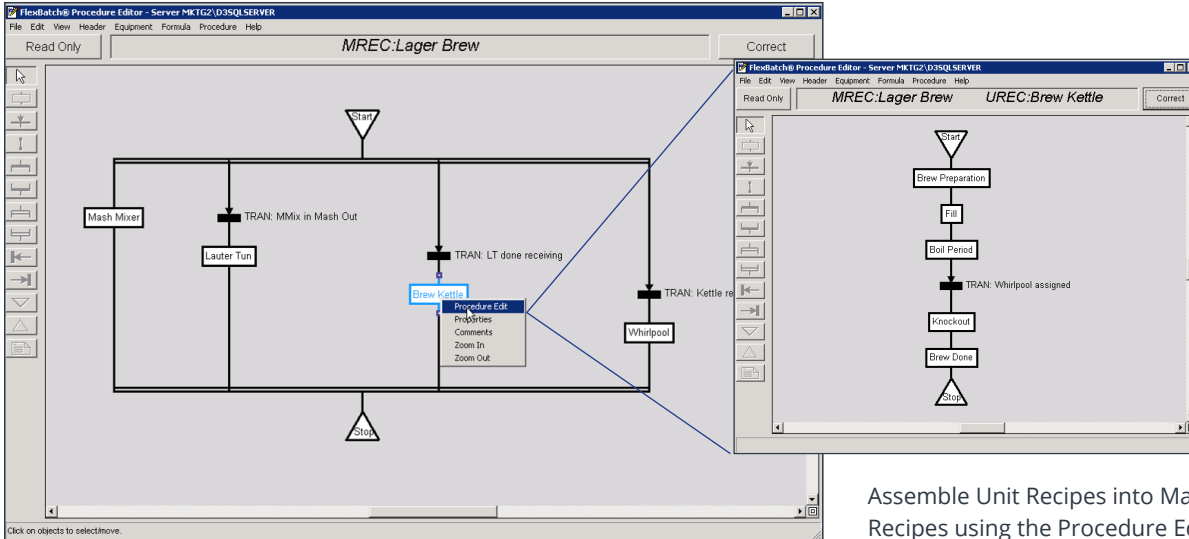
To simplify the creation, maintenance, and documentation of procedures, FlexBatch® uses the same graphical editor to create Procedure Charts for all aspects of production. FlexBatch extends the capability defined in ISA-88 with the ability to define complex transitions between entities, which greatly simplifies or eliminates controller programming.

The recipe developer can create phase and operation classes and store them in libraries. These are the reusable objects which the recipe developer inserts graphically into procedures.

Meanwhile, the control engineer can define the plant equipment and the equipment connections within FlexBatch. The actual phases are created using D/3® development tools.

This modular approach to creating recipes and phases saves time, reduces testing and errors, and simplifies validation. Because procedures are part of the recipes, producing or modifying a recipe is simple and virtually error-free.

Assemble Recipes, Campaigns & Batches



Assemble Unit Recipes into Master Recipes using the Procedure Editor

Modify On-the-Fly

At any point during recipe development and execution, personnel can modify:

- Recipe Parameters (ex: Amount of enzyme to add)
- Recipe Procedure (ex: Don't use agitator for this batch)
- Schedule (ex: Make 10 batches instead of 5)
- Batch Start Rules (ex: Start batch after a certain operation completes)
- Equipment Utilization (ex: Only use Kettle 2 for this batch)
- Scale Batch Amount (ex: 500kg instead of 200kd) and more...

Approve Recipes and make them available to production

Execute & Manage Batches

The screenshot displays the 'Production Display Schedule View' window, which contains a table of batches and campaigns. The table has columns for Campaign/Batch/Urec, Status, Start Time, End Time, Recipe, Size, Quantit., Mode, Pend. C., Batch N., and Status Detail. Campaign C-422 is highlighted as 'Running'.

The 'Campaign Properties' dialog box is open, showing details for Campaign C-422. It includes fields for Campaign name, Status (Running), Mode (Auto), Start Rule (Start When Enabled), and Production Type (Batch Goal). It also shows the number of Completed Batches (51) and Total Batches (54).

At the bottom of the main window, there are 'Operator Controls' (Start, Hold, Continue, Abandon) and 'View Controls' (Scope: Schedule View, Batch Filter: Demo). The status bar shows 'Campaign: C-422: Running' and 'Last Update: 11/29/2011 3:45:18 PM'.

Create Campaigns, Schedule Batches, and Adjust Properties with the Control, Schedule, and Production views

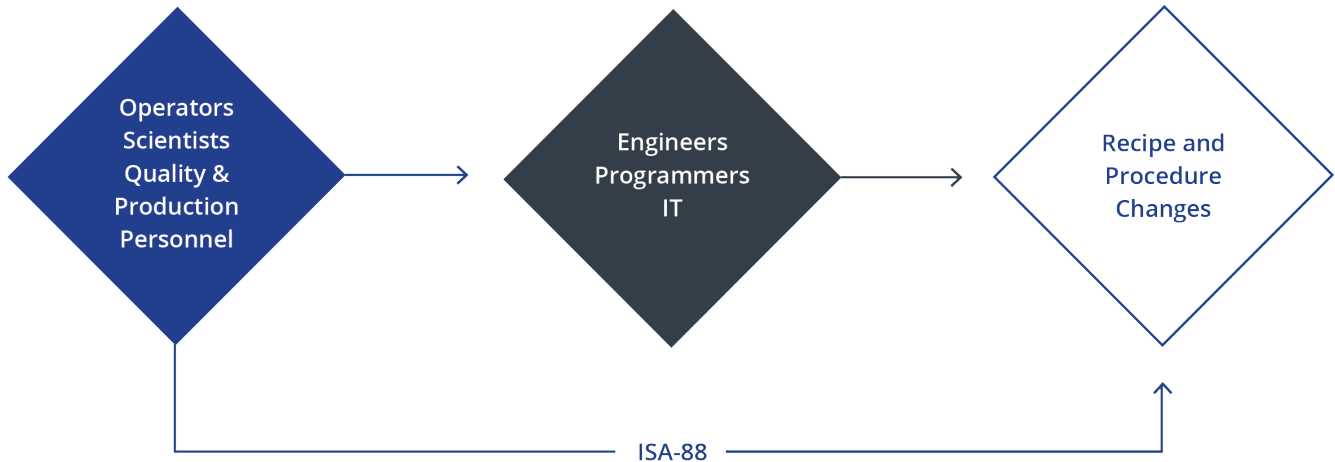
The screenshot displays the 'Production Display Control View' window, showing a detailed view of the production process for Batch B-3526. The window is divided into several panes: a list of batches on the left, and detailed views for 'Mash Mixer', 'Lauter Tun', 'Brew Kettle', and 'Whirlpool' on the right. Each pane shows the current status and various parameters like 'Oper/Phase', 'S', and 'C'.

The 'Operator Controls' at the bottom include Start, Hold, Continue, and Abandon buttons. The 'View Controls' show 'Scope: Control View' and 'Batch Filter: Demo'. The status bar indicates 'Phase: C-423/B-3526/Whirlpool/Decant to Cooler/Whirlpool Decant to Cooler: Running' and 'Last Update: 11/29/2011 3:40:56 PM'.

How Can We Help?

For more detailed information on NovaTech products, services, or customer references, contact the NovaTech representative in your area, email info@novatechweb.com or call us at 800.253.3842

ISA-88: The Shortest Path to Recipe Changes



FlexBatch® integrates recipe management with the manufacturing process by making the automation procedure part of the recipe. Developers, engineers, and production staff can quickly develop and modify documented recipes, and immediately schedule them for production. Batch cycle times and life-cycle automation costs are reduced, recipes can be modified using class object libraries, and new and existing products are brought to market faster and at a lower cost, giving you strategic and financial advantages over your competitors.

Designed in accordance with the ISA-88 standard for batch control, FlexBatch reduces dependence on control engineers. It empowers recipe developers, and operations staff to make recipe, procedure, and equipment changes via intuitive graphical tools. Production staff can create, modify, and manage batches or execute library procedures to overcome process upsets. They will not need a control engineer to adjust a batch in production or be stymied by difficult to understand programming at 3:00 a.m. all of which means a more nimble, responsive, and profitable process.

Empower Production Staff to:

- Quickly develop, scale-up, and produce new products
- Adjust and adapt products to new customer demands
- Easily schedule and change production
- Allocate/De-allocate plant equipment on-the-fly
- Experiment with new recipes
- Create and execute campaigns
- Pre-schedule batches/campaigns
- Automatic batch sequencing
- Selection of equipment at run time

FlexBatch Delivers:

- Shorter time to first batch
- Increased throughput
- Increase production yield
- Faster changeover times
- Improved equipment utilization
- Lower engineering costs
- Reuse of software



novatechweb.com

Copyright © 2016 NovaTech, LLC. All rights reserved.
All brand and product names mentioned in this document are trademarks of their respective owners.
FlexBatch and D/3 are registered trademarks of NovaTech, LLC. NovaTech is a registered trademark of NovaTech, LLC. The information in this literature is subject to change without notice and is not to be construed as a warranty. OV_FlexBatch_082216