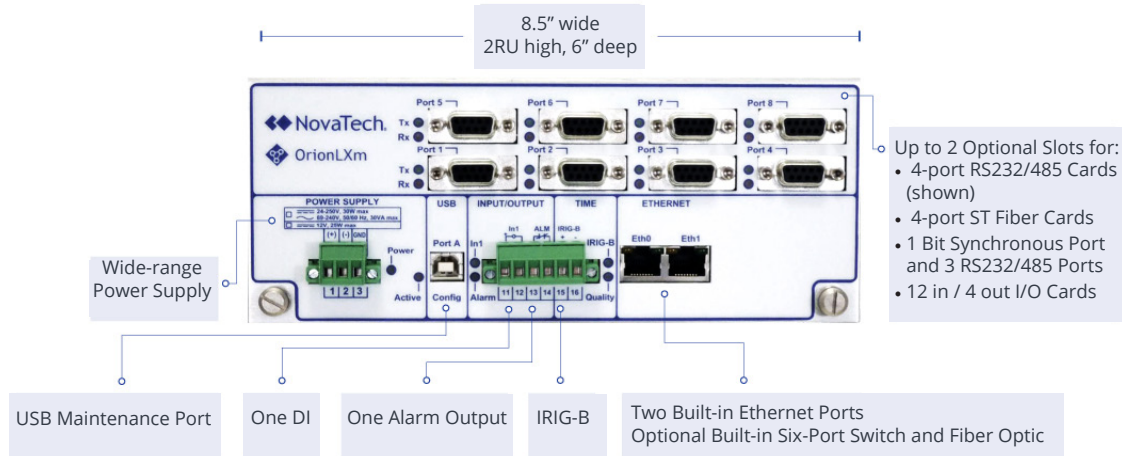


# OrionLXm™ Automation Platform

The OrionLXm is a physically smaller OrionLX™ designed for applications requiring fewer connections and less space; typically smaller distribution substations and OEM and pole-top RTU applications.

## Key Features

- Runs all OrionLX software options and protocols - same “code base”
- All connections and diagnostic LEDs on the front face
- Universal mounting: panel, 19” rack or DIN-rail
- Complete suite of Cyber Security features



## Specifications

### Environmental

Operating Temperature	-40C to +70C
Storage Temperature	-40C to +85C
Operating Humidity	5 to 95% non-condensing

### Performance/Capabilities

IED/SCADA Points	20,000
DNP3 Connections to IEDs	128
Refresh Rate	< 2 sec; typical

### Processor

CPU	800MHz
Events Storage (non-volatile)	4GB

### Physical Connections

IRIG-B	Input: Unmodulated or Modulated Twisted Pair
Ethernet	2 RJ45 10/100 copper
Maintenance Port	USB Type B Connector
Discrete Input	LV: 12-24V dc nominal HV: 48-125V dc nominal
Alarm Contact	Form B relay

### Power Supply

Input Voltage	#1: 24-250V dc ± 15%, 120-240V ac ± 15%, 50-60Hz #2: 12V dc (10.5-15.0V dc)
---------------	--

### Power Required

**10 Watts (typical)**  
15 Watts (max)

## Mounting Options



Horizontal Panel Mount - Conventional



Horizontal Panel Mount - Top of panel and bottom of panel variations



Vertical Panel Mount

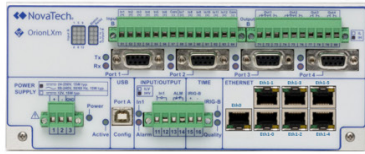


Horizontal DIN Rail

Horizontal DIN Rail

**Optional Built-in Six-Port Switch and Fiber Optic**

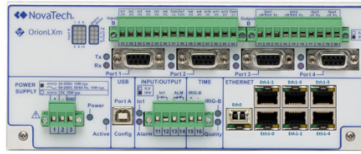
The OrionLXm can be ordered with a six-port unmanaged switch, or with one port either Multimode or Single Mode fiber optic. Ordering options below:



**Option 1E6E**  
**E0: Copper**  
**E1: Six-port Copper Switch**

E0: One port with Copper Ethernet TCP/IP 10BaseT/100BaseTX (NIC #1)

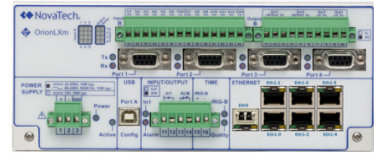
E1: Six-port Unmanaged Switch with Copper Ethernet TCP/IP 10BaseT/100BaseTX (NIC #2)



**Option 1M6E**  
**E0: Fiber (Multimode)**  
**E1: Six-port Copper Switch**

E0: One port with Multimode Fiber Ethernet TCP/IP 100FX LC Connector (NIC #1)

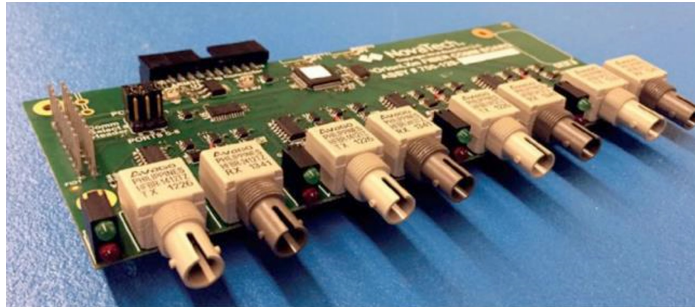
E1: Six-port Unmanaged Switch with Copper Ethernet TCP/IP 10BaseT/100BaseTX (NIC #2)



**Option 1S6E**  
**E0: Fiber (Single Mode)**  
**E1: Six-port Copper Switch**

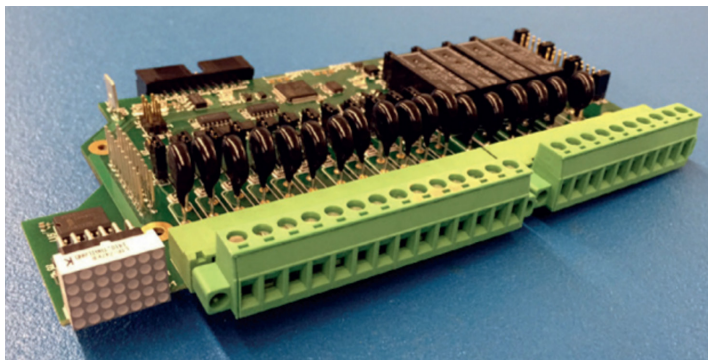
E0: One port with Single Mode Fiber Ethernet TCP/IP 100FX LC Connector (NIC #1)

E1: Six-port Unmanaged Switch with Copper Ethernet TCP/IP 10BaseT/100BaseTX (NIC #2)



**4-port ST Fiber Card**  
**Specifications**

- Four serial fiber ports
- ST Port
- 800-850nm
- Software settings for Point-to-Point or Multidrop (echo)



**12-in / 4-out I/O Card**  
**Input Specifications**

- Screw terminal connectors, #12-24 gauge wire.
- "IL" jumper: 12-48V dc nominal
- "IH" jumper: 125-250V dc nominal
- Time stamped to +/-10ms

**Output Specifications**

- Screw terminal connectors, #12-24 gauge wire.
- Two form A (Normally Open) dry contacts
- Two form C (Normally Open/Normally Closed) dry contacts
- Make 30A, carry 10A
- Outputs can be monitored for open / closed status



novatechweb.com



Copyright © 2019 NovaTech, LLC. All rights reserved. All brand and product names mentioned in this document are trademarks of their respective owners. NovaTech is a registered trademark of NovaTech, LLC. OrionLXm and OrionLX are trademarks of NovaTech, LLC. The information in this literature is subject to change without notice and is not to be construed as a warranty. DS\_OrionLXm\_090619